

Safety in Cycling in Lakewood Ranch



Statistics

- In 2011:
 - 677 bicyclists were killed and
 - 38,000 bicyclist injured.



Safety

While we know it is fun to ride alone for exercise or meditation, or with a group for exercise or competition. However bike riders are required to follow the same traffic laws as a motor vehicle do when they are on the road.

In addition to that, cyclist have additional requirements for safety that do not apply to motor vehicles.

The information that follows offers a “Readers Digest” synopsis of the laws and requirements for cyclist/bike riders and joggers

Cyclist Statistics

- The 677 cyclist deaths in 2011 accounted for 2% of all traffic fatalities during the year.
- About 3/4 of all crashes occur at non-intersection locations.
- Young people are overrepresented.
- 18% of bicycle-motor vehicle crashes result in serious injuries or death.

Bicycle Crash Characteristics

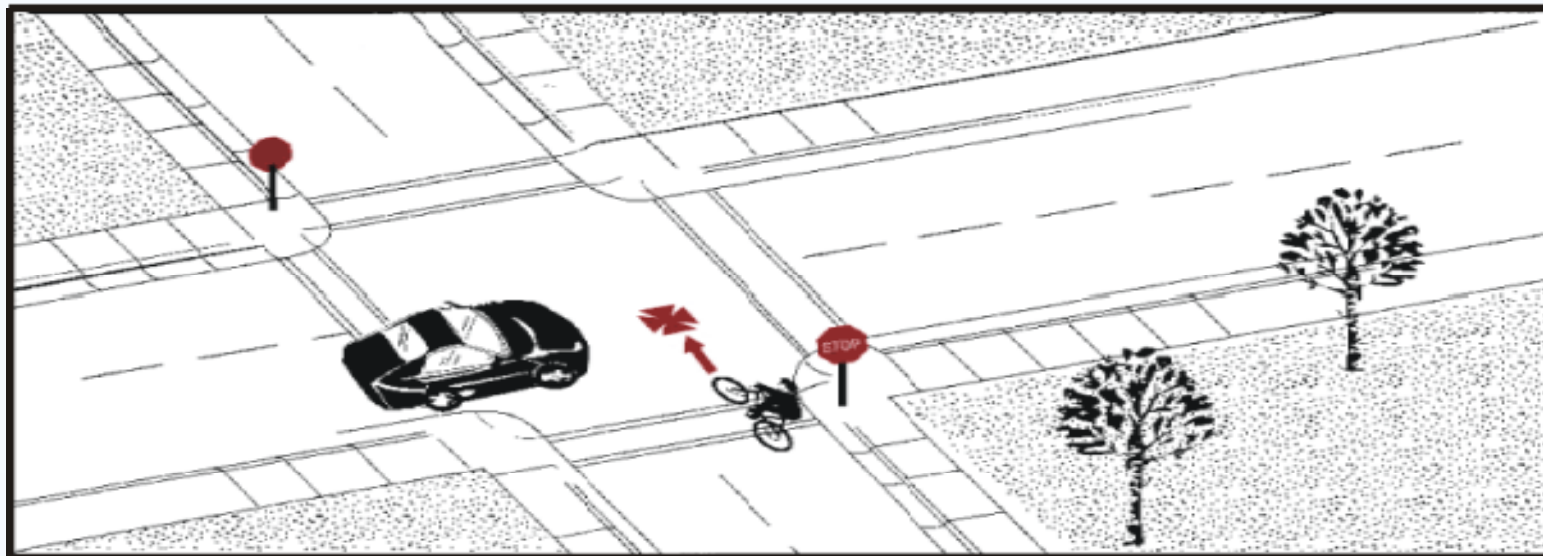
- Crashes most often occur during late afternoon or early evening.
- About 2/3 of all fatal crashes occur in urban areas.
- Bicyclists were solely at fault in 50% of the crashes.
- Younger bicyclists were at fault more often than drivers.
- 36% of crashes are parallel path collisions.
- 57% of crashes are crossing path collisions.

Bicycle Crash Types

Ride Out At Stop Sign

Frequency: 290 cases; 9.7% of all crashes
Severity: 23% resulted in serious or fatal injuries

Description: The crash occurred at an intersection at which the bicyclist was facing a stop sign or flashing red light.

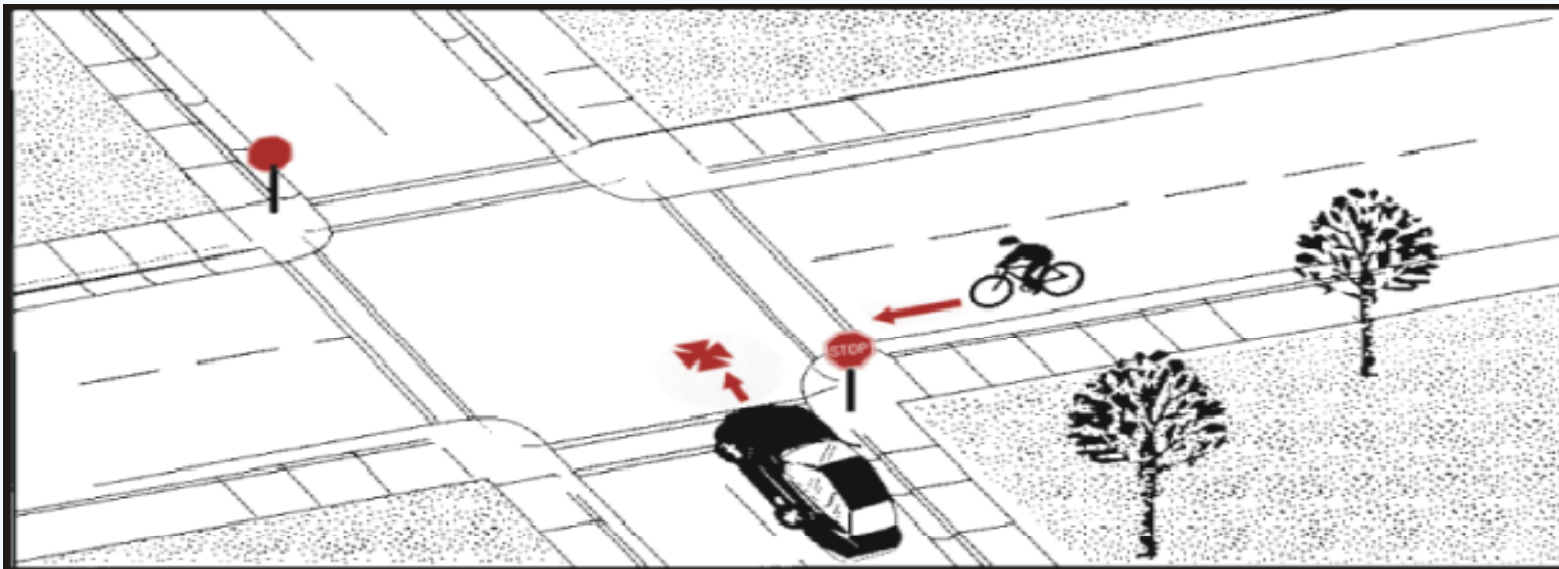


Bicycle Crash Types

Drive Out At Stop Sign

Frequency: 277 cases; 9.3% of all crashes
Severity: 10% resulted in serious or fatal injuries

Description: The crash occurred at an intersection which the motorist was facing a stop sign.



Traffic Laws for bicyclist

The Florida Uniform Traffic Control Law ([Chapter 316, Fl. Statutes](#)) governs the operation of all vehicles operated on public roads in Florida.

Traffic Laws for bicyclist

Legal status of bicycles (Sections 316.003(2), (10) and 316.2065(1), F.S.)

A bicycle is classified as a vehicle. A person in control of a vehicle on a street or highway is a driver. As a driver, a cyclist must follow the traffic rules common to all drivers. As the driver of a bicycle, he must also obey regulations adopted specially for bicycles. A person riding a bicycle has all the rights applicable to any driver, except as to special regulations for bicycles.

Traffic Laws for bicyclist

Definition of “Bicycle” (Section 316.003(2), F.S.)

Every vehicle propelled solely by human power, and every motorized bicycle propelled by a combination of human power and an electric helper motor capable of propelling the vehicle at a speed of not more than 20 miles per hour on level ground upon which any person may ride, having two tandem wheels, and including any device generally recognized as a bicycle though equipped with two front or two rear wheels.

Traffic Laws for bicyclist

Driving on right side of roadway (Section 316.081, F.S.)

Upon all roadways of sufficient width, a vehicle shall be driven on the right half of the roadway.

Comment: *A cyclist on a roadway must ride on the side reserved for his direction of travel. Riding in the opposite direction, so as to face oncoming traffic, doubles the risk of collision with a motor vehicle and is a contributing factor in about 15 percent of bicycle-motor vehicle crashes.*

Traffic Laws for Bicyclist

Equipment requirements and carriage of passengers

(Section 316.2065(2), (3), (7), (8), and (14), F.S.)

- *A bicycle operated between sunset and sunrise must be equipped with a lamp on the front exhibiting a white light visible from 500 feet to the front and both a red reflector and a lamp on the rear exhibiting a red light visible from 600 feet to the rear.*

Traffic Laws for Bicyclist

Equipment requirements and carriage of passengers

(Section 316.2065(2), (3), (7), (8), and (14), F.S.)

- *A bicycle rider or passenger under 16 years of age must wear a bicycle helmet that is properly fitted, fastened securely, and meets a nationally recognized standard.*
- *Bicyclists must use a fixed, regular seat for riding.*

Traffic Laws for Bicyclist

Equipment requirements and carriage of passengers

(Section 316.2065(2), (3), (7), (8), and (14), F.S.)

- *A bicycle may not be used to carry more persons at one time than the number for which it is designed or equipped.*
- *An adult bicyclist may carry a child in a backpack or sling, child seat or trailer designed to carry children.*
- *A bicyclist may not allow a passenger to remain in a child seat or carrier when not in immediate control of the bicycle*

Traffic Laws for Bicyclist

Equipment requirements and carriage of passengers

(Section 316.2065(2), (3), (7), (8), and (14), F.S.)

- *At least one hand must be kept on the handlebars while riding.*
- *Every bicycle must be equipped with a brake or brakes which allow the rider to stop within 25 feet from a speed of 10 miles per hour on dry, level, clean pavement.*

Traffic Laws for Bicyclist

Sidewalk riding Section 316.2065(10) and (11), F.S.)

- *A person propelling a vehicle by human power upon and along a sidewalk, or across a roadway upon and along a crosswalk, has all the rights and duties applicable to a pedestrian under the same circumstances.*

Traffic Laws for Bicyclist

Sidewalk riding Section 316.2065(10) and (11), F.S.)

- A person propelling a bicycle upon and along a sidewalk, or across a roadway upon and along a crosswalk, shall yield the right-of-way to any pedestrian and shall give an audible signal before overtaking and passing such pedestrian.*

Traffic Laws for Bicyclist

Signaling a turn or stop (Sections 316.155(2), (3) and 316.157(1), F.S.)

- A signal of intention to turn must be given during the last 100 feet traveled by the vehicle before turning. If a bicyclist needs both hands for control, the signal need not be given continuously. A cyclist signals intent to turn left – by extending the left arm horizontally or turn right – by extending the right arm horizontally or*
- To stop or suddenly reduce speed – by extending the left hand and arm downward*

Traffic Laws for Bicyclist

Wearing of headsets (Section 316.304(1), F.S.)

No person shall operate a bicycle while wearing a headset, headphone or other listening device, other than a hearing aid or instrument for the improvement of defective human hearing.

Traffic Laws for Bicyclist

Obedience to traffic control devices(Section 316.074, F.S.)

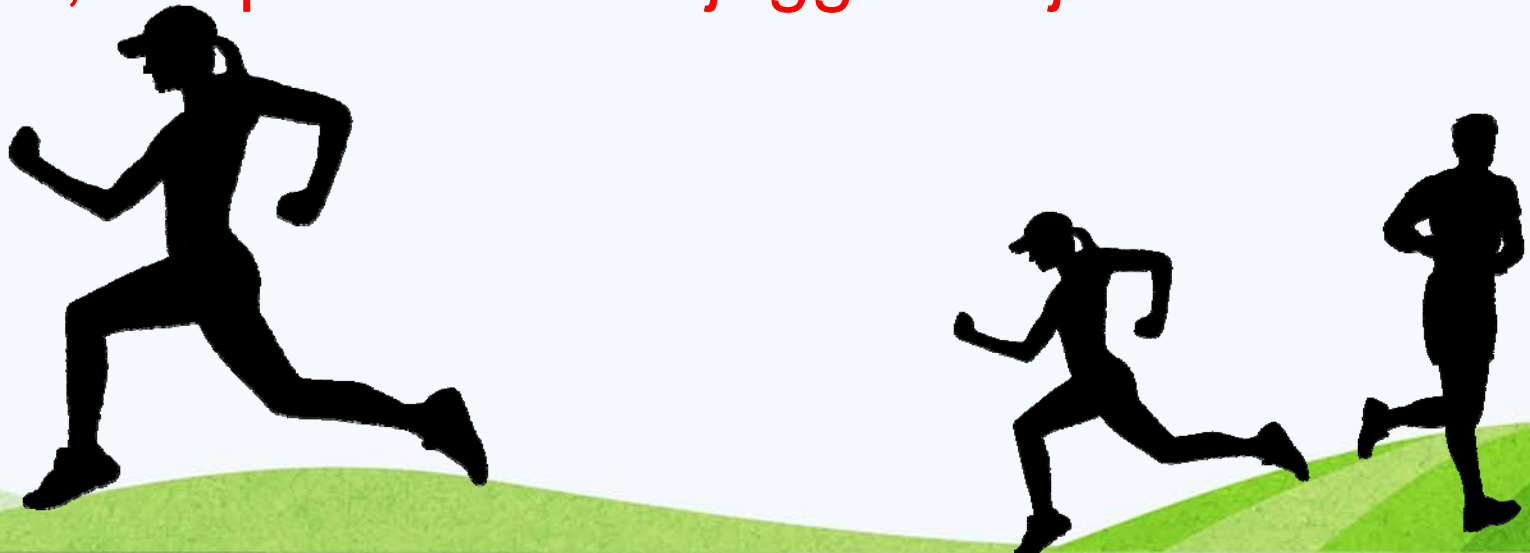
The driver of any vehicle shall obey the instructions of any applicable official traffic control device.

Safely jogging in Lakewood Ranch



Statistics

- In 2011:
 - 4,749 pedestrians & joggers were killed and
 - 69,000 pedestrian & joggers injured.



Pedestrian/Jogger Statistics

- Crashes most often occur during late afternoon or early evening hours.
- About 2/3 of all crashes occur in urban areas.
- 69% of fatal pedestrian crashes occur at non-intersection locations.
- Most injury crashes occur at intersections.
- Pedestrians were solely at fault in 43% of crashes.
- Drivers were solely at fault in 35% of crashes.

Jogging in Lakewood Ranch

Florida Statue 316.130

Pedestrians; traffic regulations

(1) A pedestrian shall obey the instructions of any official traffic control device specifically applicable to the pedestrian unless otherwise directed by a police officer.

Jogging in Lakewood Ranch

Florida Statue 316.130

Pedestrians; traffic regulations

(2) Pedestrians shall be subject to traffic control signals at intersections as provided in FS 316.075, but at all other places pedestrians shall be accorded the privileges and be subject to the restrictions stated in this chapter.

Jogging in Lakewood Ranch

Florida Statue 316.130

Pedestrians; traffic regulations

(3) Where sidewalks are provided, no pedestrian shall, unless required by other circumstances, walk along and upon the portion of a roadway paved for vehicular traffic.

Jogging in Lakewood Ranch

Florida Statue 316.130

Pedestrians; traffic regulations

(4) Where sidewalks are not provided, any pedestrian walking along and upon a highway shall, when practicable, walk only on the shoulder on the left side of the roadway in relation to the pedestrian's direction of travel, facing traffic which may approach from the opposite direction.

The background features a stylized landscape. The top portion consists of several horizontal, wavy bands of varying shades of blue, suggesting water or a sky. The bottom portion consists of several rounded, overlapping hills in various shades of green, suggesting a grassy field. The central area is a plain, light blue-grey color.

Discussion

Definitions

FS 316.003

BICYCLE. Every vehicle propelled solely by human power, and every motorized bicycle propelled by a combination of human power and an electric helper motor capable of propelling the vehicle at a speed of not more than 20 miles per hour on level ground upon which any person may ride, having two tandem wheels, and including any device generally recognized as a bicycle though equipped with two front or two rear wheels. The term does not include such a vehicle with a seat height of no more than 25 inches from the ground when the seat is adjusted to its highest position or a scooter or similar device.

Definitions

FS 316.003

VEHICLE. *Every device, in, upon, or by which any person or property is or may be transported or drawn upon a highway, excepting devices used exclusively upon stationary rails or tracks.*